



Sustainable housing system

Construction was never faster and easier



In 2030,
there will be
demand for

96 000

new affordable
and accessible
housing units
every day

By 2030, UN-Habitat estimates that 3 billion people, about 40 per cent of the world's population, will need access to adequate housing. This translates into a demand for 96,000 new affordable and accessible housing units every day. Additionally, an estimated 100 million people worldwide are homeless and one in four people live in harmful conditions that to their health, safety and prosperity.

Source <https://unhabitat.org/topic/housing>

Deloitte.

**In 2022, in Prague
70 m² Apartment
costs**

15,3x

**Average Year
Gross Income**

„Ve srovnání vybraných evropských metropolí je na tom hůře než Praha, kde získání vlastního bydlení vychází na 15,3 průměrných hrubých ročních platů, jen Amsterdam. Holanďané za byty ve svém hlavním městě vydají 17,7 průměrných hrubých ročních platů. Nejméně takových platů, konkrétně 6,8, potom stojí bydlení v Oslu,“

Source

<https://www2.deloitte.com/cz/cs/pages/press/articles/property-index-2022.html>

What do we have plenty of?



People



Food production



CO₂

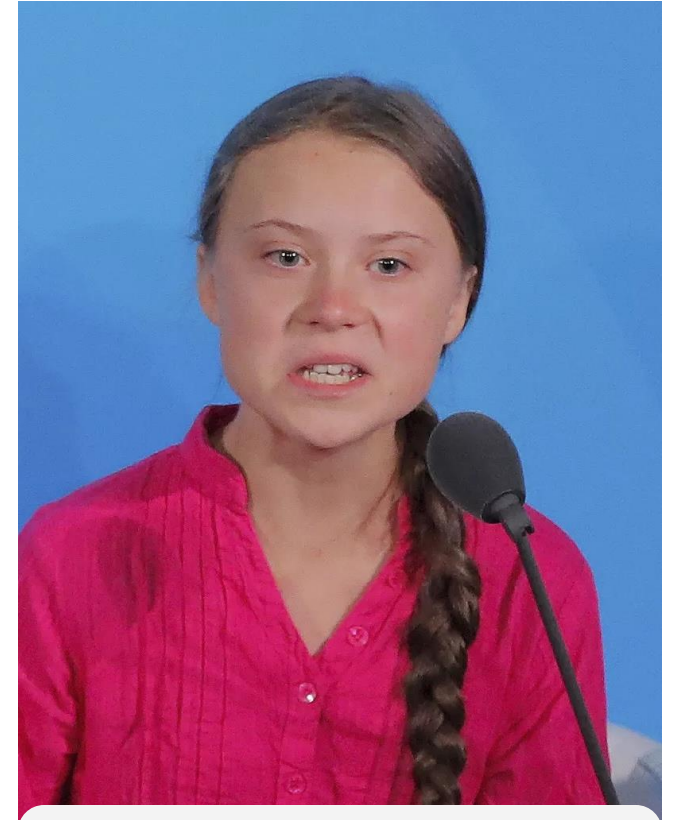
What are we lacking?



Affordable housing

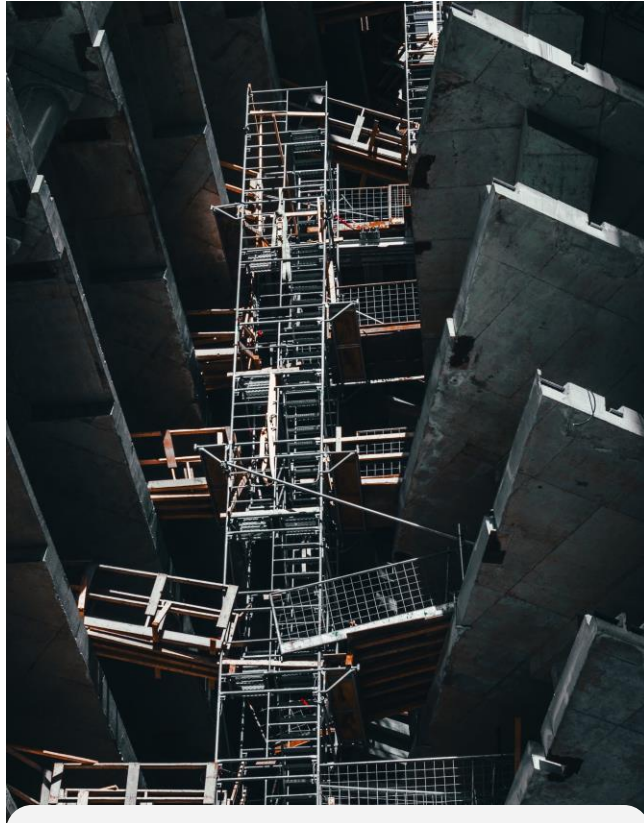


Finance



Time

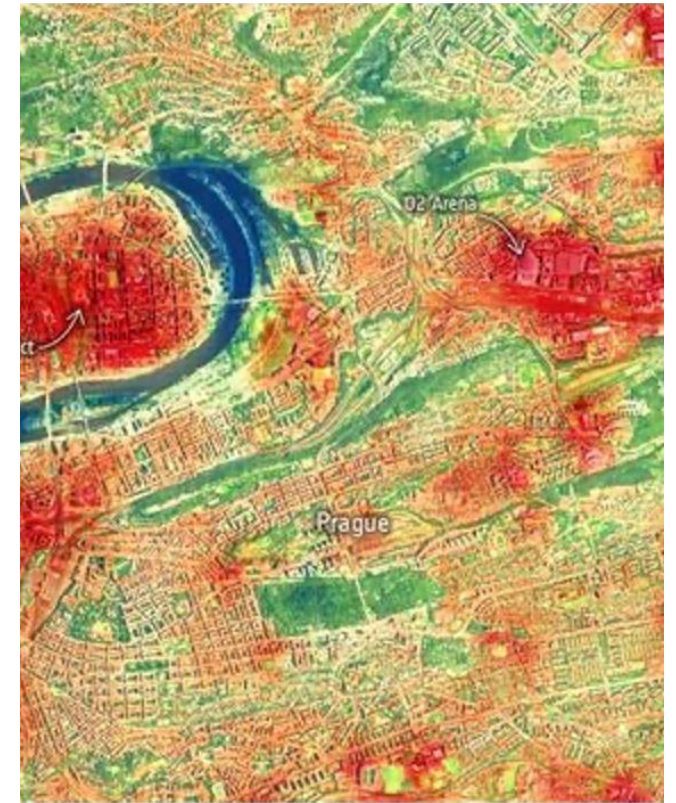
Challenges for Const. Industry



Carbon Reduction Goals



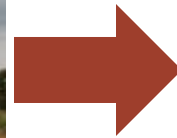
Global Supply Chain



Climate Change Adaptation

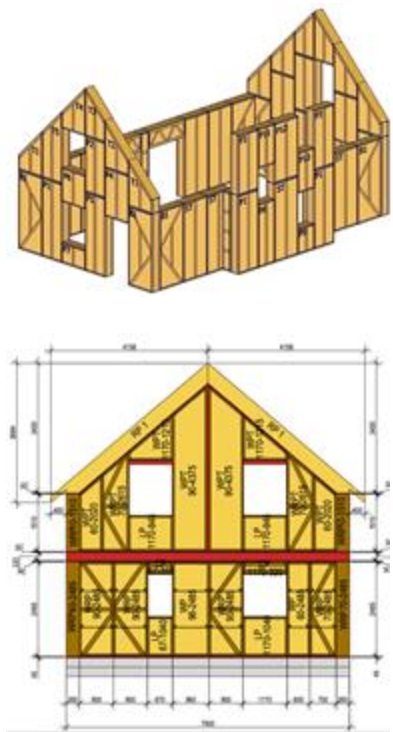


Construction materials for the next generation of housing



Bratislava, Slovakia
Svarog Buildings s.r.o , 2023

Step by step



1.



2.



3.



4.

Construction process

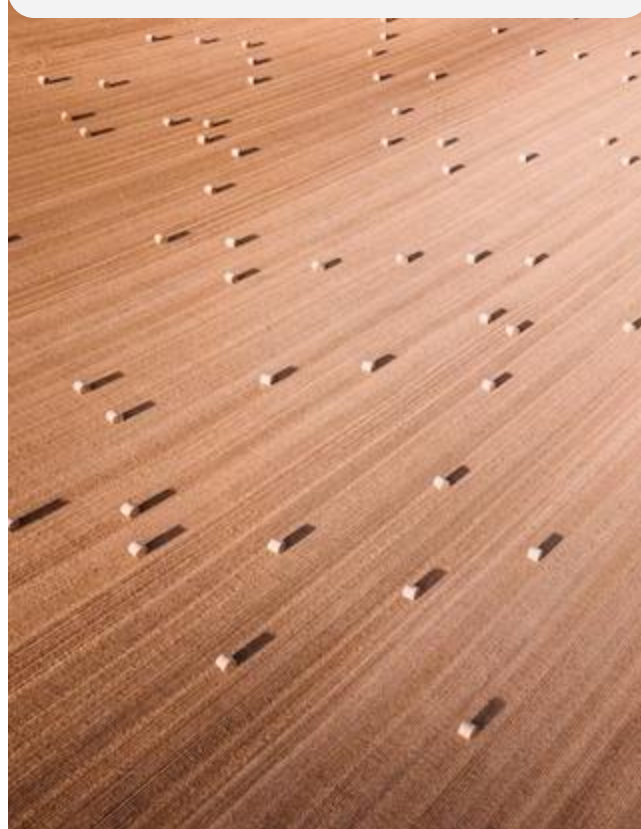


Why straw?

Long History



Availability



Suitable for Const. Industry



Philosophy



Simplicity

No compromise sustainability

Climaskepticism resistant

Affordability

Market ready

No constraints

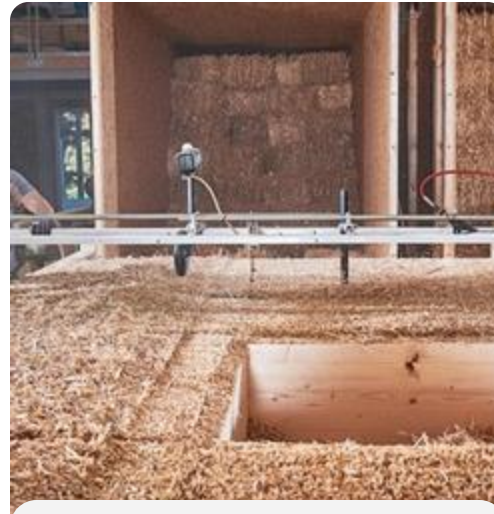
Svarog competence & technology



Industrial scale



Prefabrication



**Automation
Productivity**

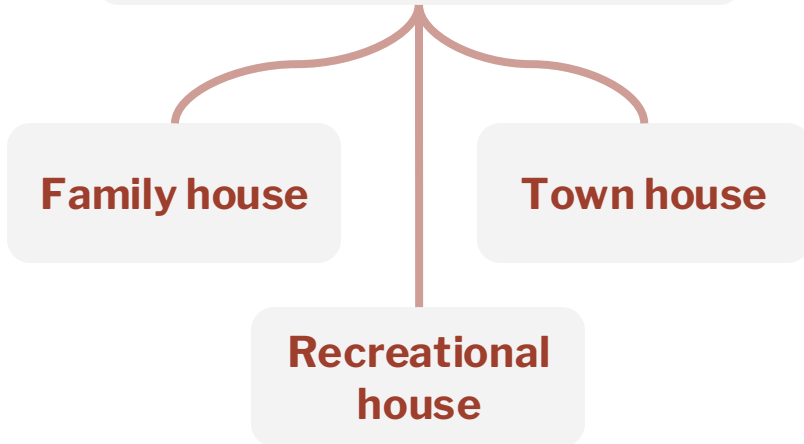


Easy adoption

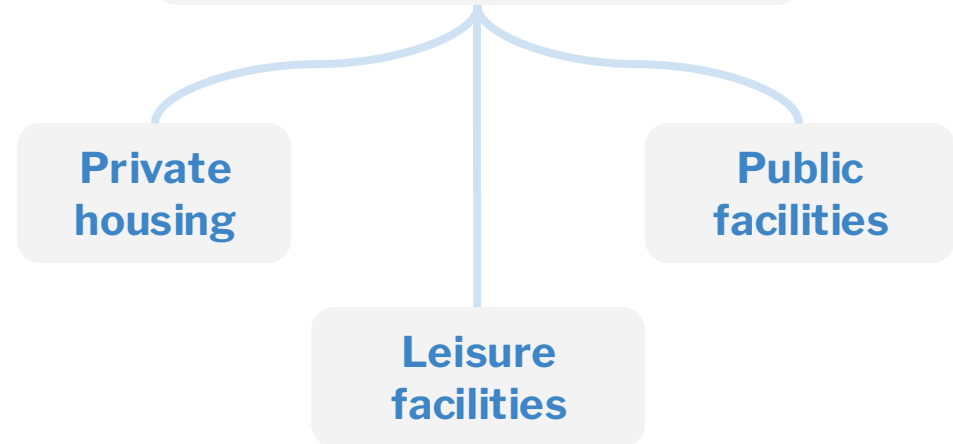
Who is the customer?



Single entities



Developers



Compare



Main technology	Brick / Concrete house	Wooden house	Svarog SCS House
CO ₂ footprint	42 000 - 45 000 Kg	25 000 - 28 000 Kg	16 000 - 18 000 Kg
Heat loss	80 - 120 kW*h/sqm	45 - 60 kW*h/sqm	25 - 35 kW*h/sqm
Time to build	160-180 days	45-60 days	45-60 days
Utilisation cost	Maximum	Middle	Low

Raw construction of typical house 100-120 m², uninsulated...

Plans & Results

Accomplished 2022 - 2023

Showcase buildings

Train manufacturing
and assembling teams

Investments to launch a new line and
complete certification

Enroll for ETA and CE certification

Documentation, technical sheets,
and model libraries

Plan for 2024

Finish CE certification process

**Increase production capacity
to 18,000 m²/year**

Development project of 1000+ m²

Annual turnover of 17+ mil CZK



**THANK YOU,
TIME FOR QUESTIONS**

Artem Ryzkhov | +420 723 452 728 | info@svarogbuildings.com

David Nevaril | +420 605 142 691 | david.nevaril@svarogbuildings.com